

# MONTGOMERY COUNTY HOUSING AUTHORITY

April 2015

## FROM THE CEO

### Newsletter

**Main Office:**

216 Shelbyville Road  
Hillsboro, IL 62049

**Mailing Address:**

P.O. Box 591  
Hillsboro, IL 62049

**Phone:**

217-532-3672

**Toll Free:**

1-877-532-3672

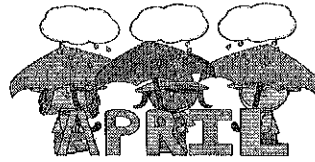
**Fax:** 217-532-3625

**Office Hours:**

Monday-Friday  
8:00 a.m. - 4:30 p.m.  
Closed for Lunch  
12:00 p.m. - 1:00 p.m.

**Website:**

[www.montgomeryhousing.org](http://www.montgomeryhousing.org)



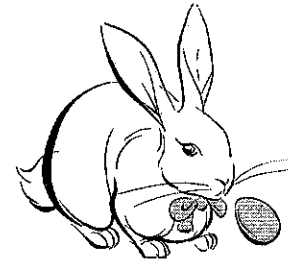
Spring has officially arrived ☺

Hopefully the days will start to get sunnier and warmer.

Lawn mowing is scheduled to begin in April. Please be sure to keep your yard picked up and ready for the mowers. More information is in the Maintenance Column.

As you begin to spend more time outdoors, please keep some things in mind: keep the noise down, your kids out of the service lanes, etc. You are responsible for your children!

Remember to be considerate of others; and always keep safety in mind! We appreciate your cooperation.



Our Annual Easter Egg Hunt is scheduled for April 2, 2015 from 2:00 p.m. to 4:00 p.m. Please see the attached flyer for more details. All residents are welcomed! We look forward to visiting with everyone!

Happy Spring & Have a great month!

*Kelly A. Mononey,*  
Chief Executive Officer



# MONTGOMERY COUNTY HOUSING AUTHORITY

April 2015

## OFFICE CALENDAR, RESIDENT & DEVELOPMENT NEWS

### *April* Office Hours



This office will be  
**CLOSED** on the  
following dates &  
times in: **April**

**April 2, 2015**

Thursday  
2:00-4:00 pm  
Annual Easter Egg  
Hunt  
Long Ave.  
Comm. Building

**April 3, 2015**

Friday  
(Good Friday)

**April 23, 2015**

3:00-4:30 pm  
Staff Meeting

### Welcome



Long Avenue  
Geri K.  
James G.  
Vincent G.  
Ian G

Kirk Terrace  
Sarah & Jason O.

GO Hillsboro  
Bruce H.

### Congrats☺

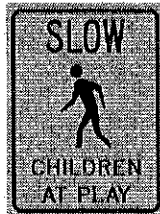
Damon S. on  
Crossing over from  
Cub Scouts to  
Boys Scouts



Great Job!!!

### Children At Play

Since the weather is  
getting nice please watch  
out for all the children  
outside playing  
Please slow down...



### With Sympathy



Our Condolences To:

Emily H. & family  
on the recent passing  
of their uncle Daniel.

Friends & Family at  
Freedom Place  
Homes on  
Rich M.  
recent passing .

### Get Well Soon

Mary L.

We hope it will make  
your day brighter  
knowing we are  
thinking of you!



# MONTGOMERY COUNTY HOUSING AUTHORITY

April 2015

## MAINTENANCE NEWS

### Mowing



Mowing will begin in April. The following is the current mowing schedule:

**Mondays- All  
Litchfield  
Developments**

**Tuesdays- All  
Hillsboro  
Developments**

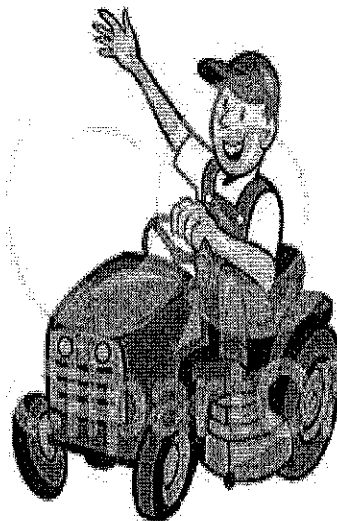
**Wednesday &  
Thursday- The  
Remaining  
Developments**

(This is subject to change)

Our Lawn Mowing Company  
is Seaton Landscape.

### Mowing Continued

Please make sure your lawn is free from debris, and please make sure items are not lying around that could be run over by the mowers. Check for toys, outside items such as hoses, trash, debris, etc. All outside items need to be moved off the grass on mowing day. Also, for safety reasons keep your children away from the lawn mowers! Your cooperation will help keep our developments looking nice.



[www.chipmunk.com](http://www.chipmunk.com) • 1125328

### Preventative Maintenance Notice

The Preventative Maintenance schedule for April is as follows:

**Long Avenue:  
Units 1-25**

Our Maintenance Staff will be in your unit to perform annual preventative maintenance.

### UPCS Inspection Notice

The Uniform Physical Condition Standard (UPCS) inspection schedule for April is as follows: MCHA Inspector will be conducting these required annual inspections - following Preventative Maintenance. If she has not been in your unit yet, she will be this month.

*Kim Micklevitz,*  
Maintenance Department

# MONTGOMERY COUNTY HOUSING AUTHORITY

April 2015

---

## MCHA PROGRAM NEWS



### Debris in Yards

Your yard should not be used as a toy box, storage area or trash can. Please help keep the developments looking nice by not allowing your household to keep their bicycles, toys, etc. all over the yard. If you have storage units, shed, or garage please place items inside. If your unit does not have a designated storage area, make sure that these items are kept near your unit. Any large items; furniture, debris, etc. placed in the yard or service lanes will be removed by maintenance and the tenant's account will be charged a hauling disposal fee.



### Reminder:

Since the weather is getting nicer and people are spending more time outdoors, please keep the following in mind:

There is no playing in the Community Building parking lots.

Writing on the Community Buildings is prohibited, along with throwing rock and/or sticks at the buildings.

If your children play at the playground or anywhere outside, please discourage foul language.

In order to encourage positive, social interaction, respecting others and their property is very important.

### Spring Cleaning Tricks

Mix a few drops of essential oil with one cup of baking soda. Sprinkle on your mattress and let sit for one hour before vacuuming. The baking soda will absorb any dirt, moisture and odors while the essential oil will leave the mattress smelling nice.

Make your own citrus vinegar clear. Place citrus peels in a jar and cover with vinegar and let the solution sit for 2 weeks. Strain and dilute with water.

Use a lemon to remove hard water stains from your faucet.

Make your own sink shine by mixing borax with lemon juice to make a paste. Rub it on, then rinse it and wipe clean.

# MONTGOMERY COUNTY HOUSING AUTHORITY

April 2015

## INFORMATION & RESOURCES

### Community Service



### Spring into Community Service

Any Public Housing Resident between ages 18 and 62 years of age **MUST** contribute 8 hours per month of community service (does not include political activities) if you are not working or attending school and continuing education.

If you do **NOT** complete 8 hours of community service a month, at the end of your least term, we will be forced to terminate your lease.

All resident activities count towards your community service. For a list of participating community service agencies, call Kelly at ext. 225.

### Did You Know???

#### Question:

Are parents responsible for the supervision of their children?

**Answer:** Yes-- Per Resident Handbooks parents will be responsible for supervision of their "minor" children.

Repeated violations of this rule may result in termination of the lease.

#### Question:

Is a blanket an appropriate window covering?

**Answer:** No--A blanket is not an appropriate covering for a window, nor is it an approved covering. Mini blinds are supplied for all windows in your unit. The blinds cannot be removed or altered in any manner.

### Recipe for Kids Simple Snack Mix

1 Cup whole grain cereal (squares or Os work best)  
 $\frac{1}{4}$  cup dried fruit of your choice

$\frac{1}{4}$  cup nuts, such as walnut pieces, slivered almonds or pistachios

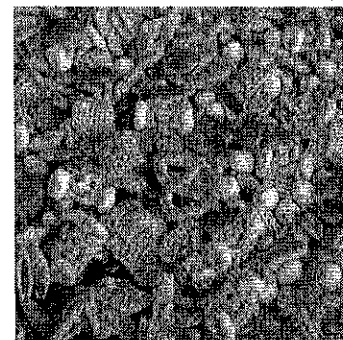
$\frac{1}{4}$  cup small, whole-grain snack crackers or pretzels

Measure out ingredients and combine in large bowl.

Makes 3 to 4  $\frac{1}{2}$  cup servings.

Use single serving bags or containers to take this snack on the go!

~<http://kidshealth.org>



# MONTGOMERY COUNTY HOUSING AUTHORITY

April 2015

## OFFICE CONTACT INFORMATION

**Website:**  
[www.montgomeryhousing.org](http://www.montgomeryhousing.org)

**Main Office Physical Address:**  
216 Shelbyville Road  
Hillsboro, IL. 62049

**Office Mailing Address:**  
P.O. Box 591  
Hillsboro, IL. 62049

**Phone:**  
(217) 532-3672

**Toll Free:**  
1(877) 532-3672  
(For residents outside of  
the Hillsboro calling area)

**Fax:**  
(217) 532-3625



**FOR AFTER HOURS  
MAINTENANCE  
EMERGENCIES ONLY!**

(217) 556-3162  
**Remember: If you  
need anything during  
office hours, call the  
office. Not the  
emergency phone.**

**Office Telephone  
Extensions:**

Front Desk: 221  
Work Orders: 221  
Maintenance: 221  
Inspector (Tami): 223  
Public Housing: 225  
(Tammy)  
CFO/COO (Lisa): 228  
Applications: 229  
(Kelly)  
Section 8 & Tax  
Credit (Claudia): 230  
Bookkeeper: 235  
(Belva)

**Office Email Addresses:**  
**Chief Executive Officer:**  
kelly@montgomeryhousing.org

**Chief Financial & Operating  
Officer:**  
lisa@montgomeryhousing.org

**Applications/Work Order Clerk:**  
applications@montgomeryhousing.org

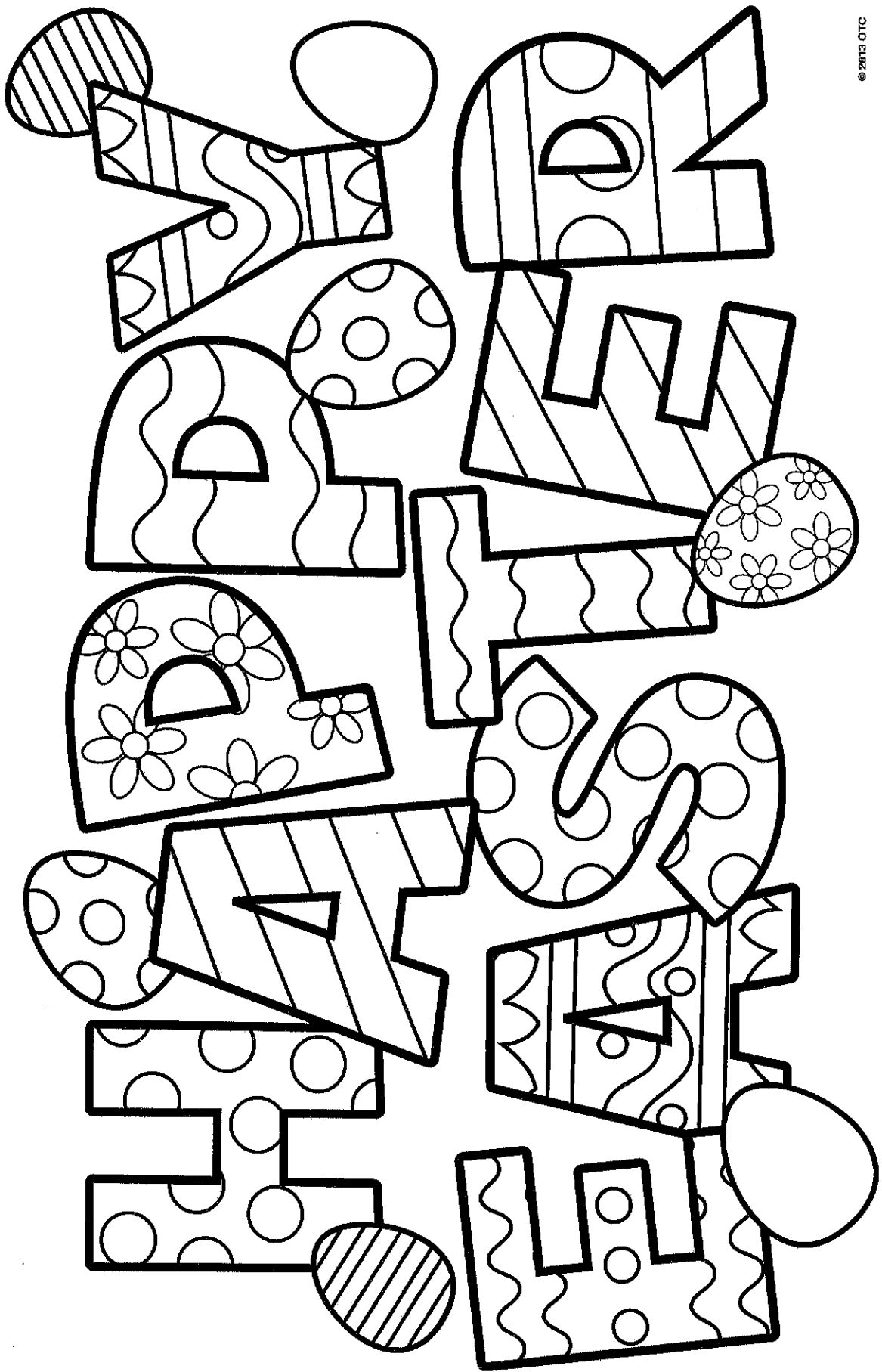
**Bookkeeper:**  
bookkeeper@  
montgomeryhousing.org

**Public Housing:**  
phleasing@  
montgomeryhousing.org

**Section 8/Tax Credit  
Properties:**  
section8@  
montgomeryhousing.org

**Maintenance:**  
maintenance@  
montgomeryhousing.org

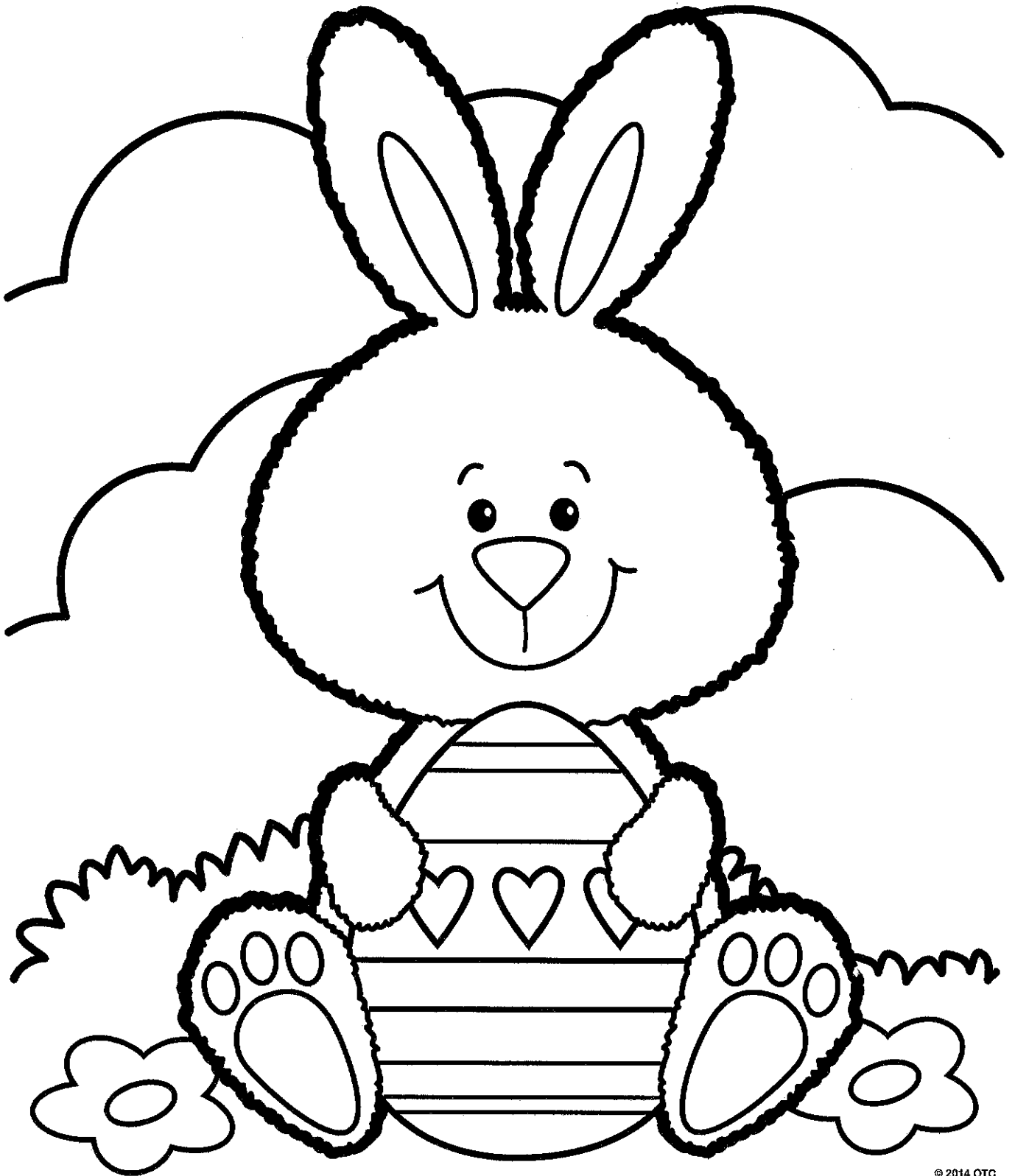
**Inspector:**  
inspector@  
montgomeryhousing.org



MONTGOMERY COUNTY HOUSING AUTHORITY

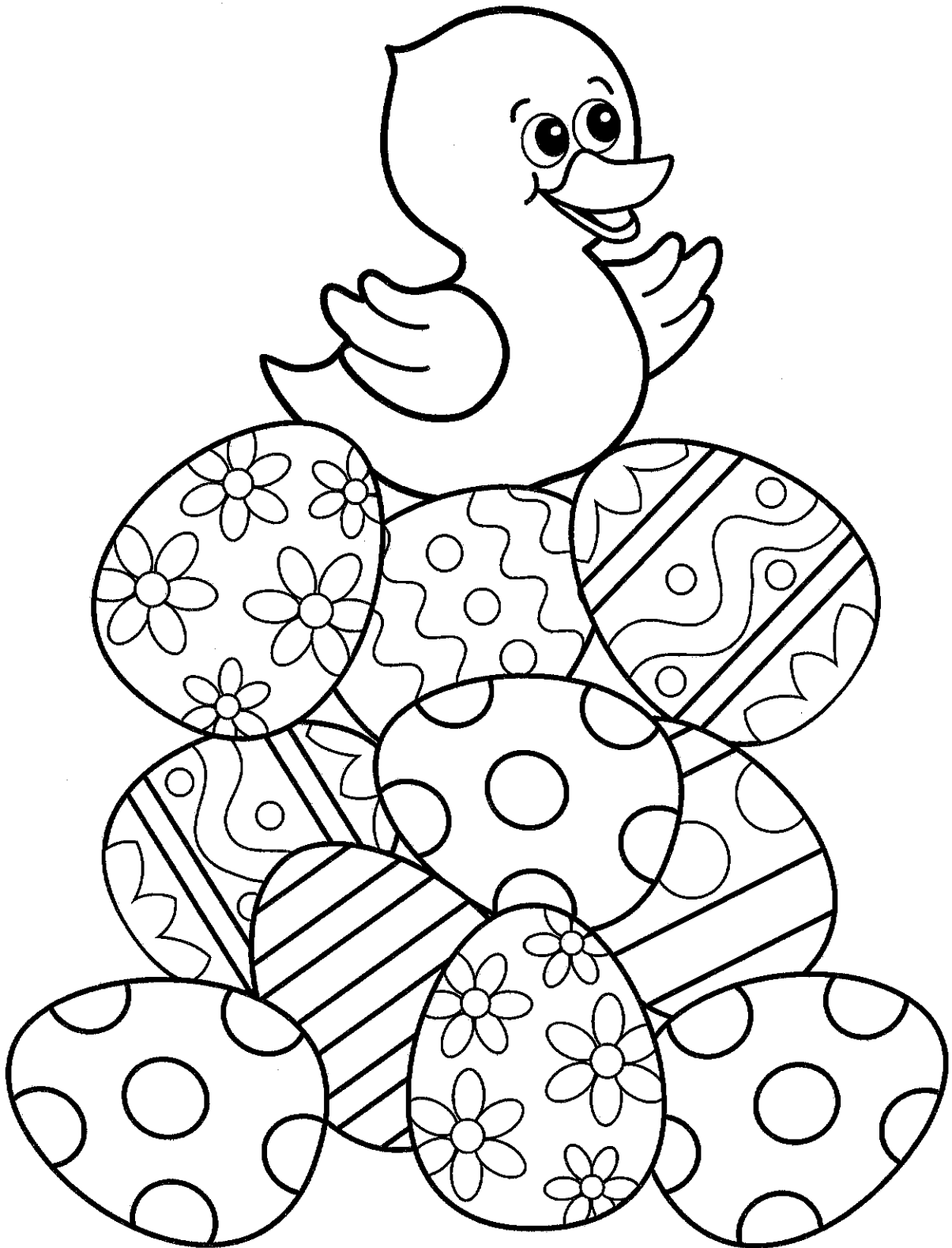
April 2015

---





KID'S PAGE



KID'S PAGE

# Easter Fun

B C E G A S D Y E  
S H A B Z U X R H  
A I S U L N E Z I  
P C T N I D G I D  
Q K E N L A G E E  
H D R Y Y Y S C G  
U A A S P R I N G  
N B A S K E T M M  
T O C A N D Y L M

## Find these words:

- |        |        |
|--------|--------|
| basket | eggs   |
| bunny  | hide   |
| candy  | hunt   |
| chick  | lily   |
| dye    | spring |
| Easter | Sunday |



# MONTGOMERY COUNTY HOUSING AUTHORITY

April 2015

## Easter Challenge

U N P C H I R L C L R Y L I M A F C P A S T K  
N H S E D P A P R I L E B R E S T H J E S T C  
E T W T E E W S T L S G H W E N E O C R A H O  
R N E B R H C D H Y C R O S S A K C W C C S L  
D U S F U N C O S O N L S G S E S O P R R Y O  
L H R L C N R H R L L O R R P B A T U C A M R  
I P E O E R N W C A T I I A R Y B H E E B B H  
H G D W L T E Y M R T M D T I L C R H R B Y O  
C R A E E E S H E L A E T A C L U E D I N N L  
D A R R B E S A E A P E L A Y E S S L A P R I  
E Y A S R R T T P A D S S P B J R U P A R A D  
C O P B A S G L I A T N O T T O C R E T E P C  
O R M M T T R N F C R H S H B N N P U M A R H  
R A K A E L T F I H U S I C C A U N J S A H O  
L B E S C H O C O L A T E H A R H C E A E U C  
S B N D C D K C A R C Y S E P S A N S T S R O  
W I G N I R P S G E A H K L B N S M U T Y B T  
E T R L R H F I P D E A E L D N E I S P S A K  
D E S C R A D I N N E R L Y D I N G E I E S C  
A F I N D C N U T R S Y M B O L H R G S A K I  
F F C C I K S C B M I T M A R S H A C S R E H  
F I H A S T T R B A J E L R A B B B A P R Y G  
O A E N P I B O O R J E S T C A N B N E N D H

### Find these words:

April	chocolate	eggs	Jesus	purple
basket	church	family	lamb	rabbit
bonnet	color	find	lily	resurrection
break	crack	flowers	March	roll
bunny	cross	grass	marshmallow	search
candy	daffodils	hide	paint	spring
celebrate	decorate	holiday	parade	Sunday
cheep	dinner	hop	pastels	sweet
chick	dye	hunt	Peter Cottontail	symbol
children	Easter	jellybeans	pink	treats